

1MARKSMAN

TECHNOLOGY SERVICES

WIRELESS RF, NETWORKING, SECURITY

Design - Deploy - Maintain



WIRELESS OVERVIEW

1Marksman provides vendor agnostic wire-less services and solutions that are client specific. These include products of Cisco, Meraki, Extreme, Ruckus, Fortinet, Aruba, Arista, Mist, D-Link, and others.

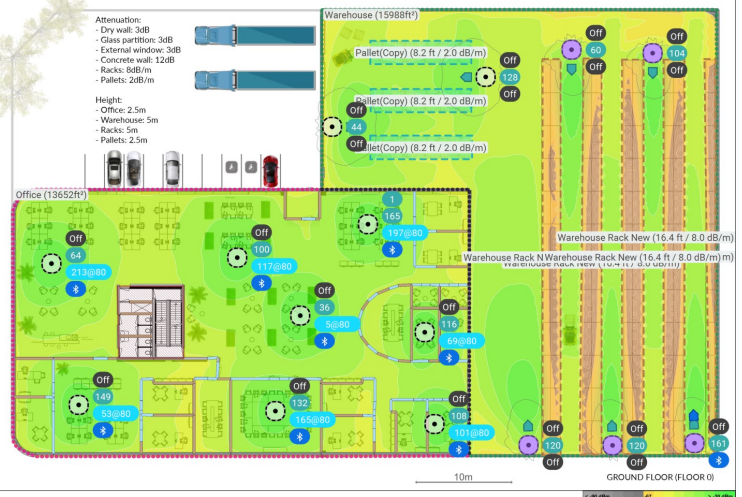
Wireless services may also extend from planning and design to maintenance and support. From a single office location in a multi-tenant space to an entire building, arena, or campus using indoor and outdoor wireless for communications.

Our Wi-Fi Engineers are experienced with many type of wireless technologies and system designs for Private Wi-Fi (2.4 GHz, 5 GHz, 6 GHz) and Private Cellular 4G/5G using n37, n40, n38 CBRS, n77, n78, n79, n102, n104 MHz .

CAPABILITIES

Our team has the knowledge, experience, and tools to assist in making wireless a great experience for all. Including:

- 🎯 RF planning and predictive analysis
- 🎯 Wireless indoor and outdoor designs
- 🎯 Wireless ISP and cellular extenders
- 🎯 Building and multi-tenant Wi-Fi and DAS
- 🎯 Arenas, theaters, and event venues
- 🎯 Point to Point and mesh wireless
- 🎯 Ekahau Site Survey and Validation
- 🎯 Wireless Security and Data Protection
- 🎯 Captive Web Portals (CWPs)
- 🎯 Troubleshooting and Remediation
- 🎯 Maintenance and Support



The Ekahau Site Survey (ESS) tools include Ekahau AI Pro, Ekahau Insights, and the Sidekick 2, and provide accurate, reliable information when planning and maintaining a wireless network.

1Marksman is an Ekahau Partner with Ekahau certified design engineers on staff and ready to start your next project!



FULL-STACK SERVICES

DESIGN & INTEGRATION



WE AIM FOR SUCCESS

1Marksman's consulting services support clients through their digital transformation and infrastructure modernization projects. We provide full-stack services for building network and security systems design, architecture, engineering, and integration. Our solution architects and engineers are trained and certified on a wide range of technologies

and products. 1Marksman's services yield unique solutions that are value-engineered to each client's business goals and objectives. We deploy each solution using technical project managers that are certified in Agile, PMP, and ITIL. This allows us to monitor the project and measure the results.

WI-FI PREDICTIVE ANALYSIS & DESIGN

- 🎯 Alignment of business requirements and Wi-Fi design for Coverage, Capacity and the Least Capable, Most Important Device
- 🎯 RF Requirements for Obstacles in the Physical Environment, Wall Material Attenuation, and RF Spectrum Activity.

WIRELESS DATA SECURITY

- 🎯 Wireless Policy, Standards, and Governance
- 🎯 Wireless SSID, Encryption, and Radio Profiles
- 🎯 Wireless Passwords, Portals, and RBAC
- 🎯 Wireless Penetration and Vulnerability Testing

WIRELESS MAINTENANCE & SUPPORT

- 🎯 Post deployment site survey and validation that the network has been deployed and configured properly and that the performance is meeting the expectations of the predictive design
- 🎯 Health Check Survey for proactively checking Wi-Fi performance over time so you can spot potential interference, coverage or capacity problems before they become costly outages

WI-FI SITE SURVEY & VALIDATION

- 🎯 Capture existing RF conditions, including your neighbor's wireless networks and channels they use
- 🎯 Identify sources of RF interference and visualize potential limitations for AP mounting

PRIVATE CELLULAR 4G/5G (CBRS)

- 🎯 Ekahau Insights for Project definition using scaled plans and interferer's such as walls, windows, shelving, racks, etc.
- 🎯 Design and validation with area selections with requirements for cellular 5G/4G deployment.
- 🎯 Frequency design for multiple spectrum's including CBRS private cellular networks

WIRELESS RF TROUBLESHOOTING

- 🎯 Wireless Coverage and Signal Strength
- 🎯 Signal to Noise (SNR) & Interferer's
- 🎯 Spectrum Channel Power Throughput, Data Rate and Capacity

